

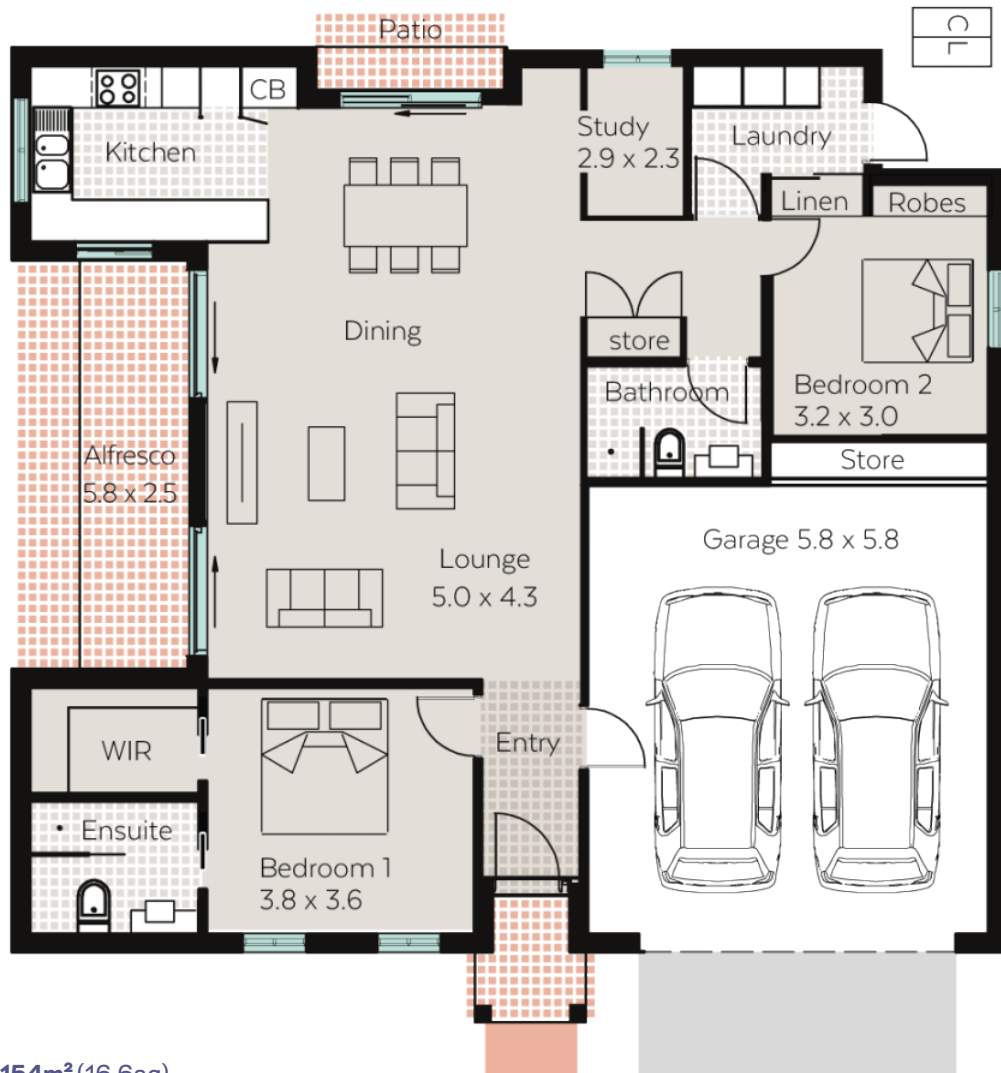
Chelsea

BELEURA VILLAGE



CENTENNIAL
LIVING

- 2 x
- 2 x
- 1 x
- 2 x



Villa and Garage	154m² (16.6sq)
Outdoor Living	18m² (1.9sq)
Total	172m² (18.5sq)

The information contained in this marketing material is indicative only and subject to change. Centennial Living Management makes no warranty regarding the accuracy of statements, figures, measurements, plans, images, location, building orientation, availability of fixtures and fittings or other representations. Please seek legal and independent financial advice in relation to all the information contained herein.

1300 098 000
www.centennialliving.com.au

Eliza

BELEURA VILLAGE



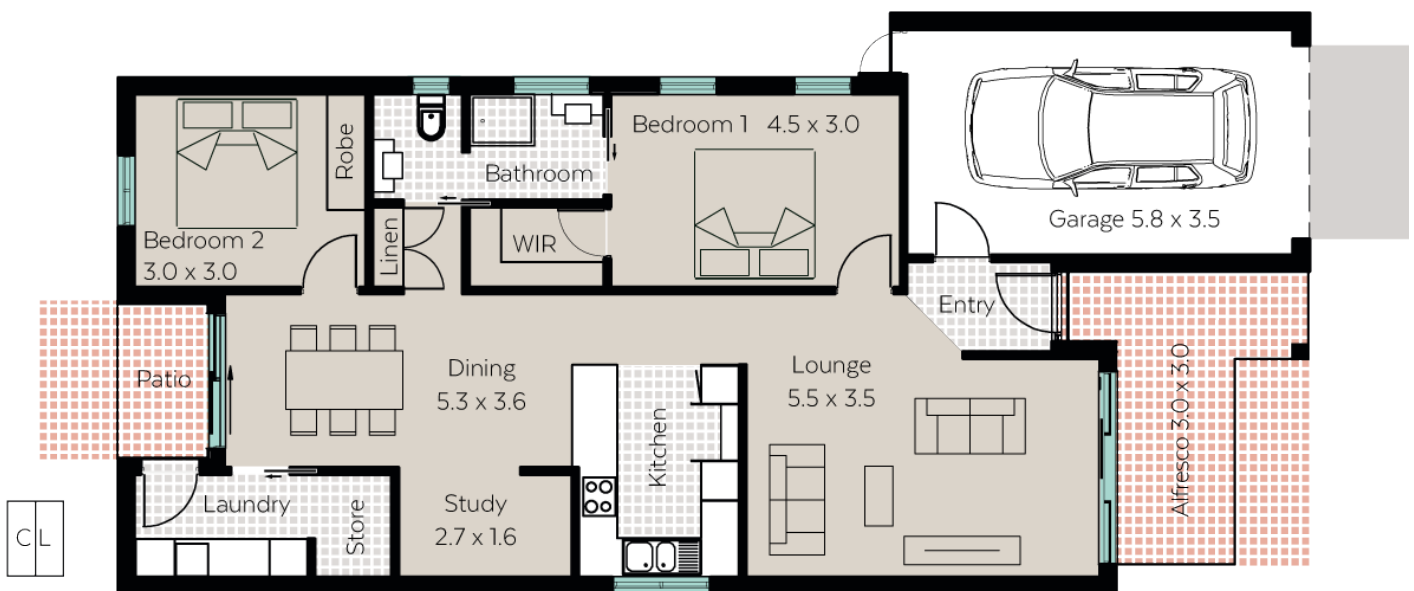
CENTENNIAL
LIVING

2 x 

1 x 

1 x 

1 x 



Villa and Garage **135m² (14.5sq)**

Outdoor Living **17m² (1.8sq)**

Total 152m² (16.4sq)

The information contained in this marketing material is indicative only and subject to change. Centennial Living Management makes no warranty regarding the accuracy of statements, figures, measurements, plans, images, location, building orientation, availability of fixtures and fittings or other representations. Please seek legal and independent financial advice in relation to all the information contained herein.

1300 098 000

www.centennialliving.com.au

Flinders

BELEURA VILLAGE



CENTENNIAL
LIVING

2 x 

2 x 

1 x 

2 x 



Villa and Garage **156m² (16.8sq)**

Outdoor Living **18m² (1.9sq)**

Total 174m² (18.7sq)

The information contained in this marketing material is indicative only and subject to change. Centennial Living Management makes no warranty regarding the accuracy of statements, figures, measurements, plans, images, location, building orientation, availability of fixtures and fittings or other representations. Please seek legal and independent financial advice in relation to all the information contained herein.

1300 098 000

www.centennialliving.com.au

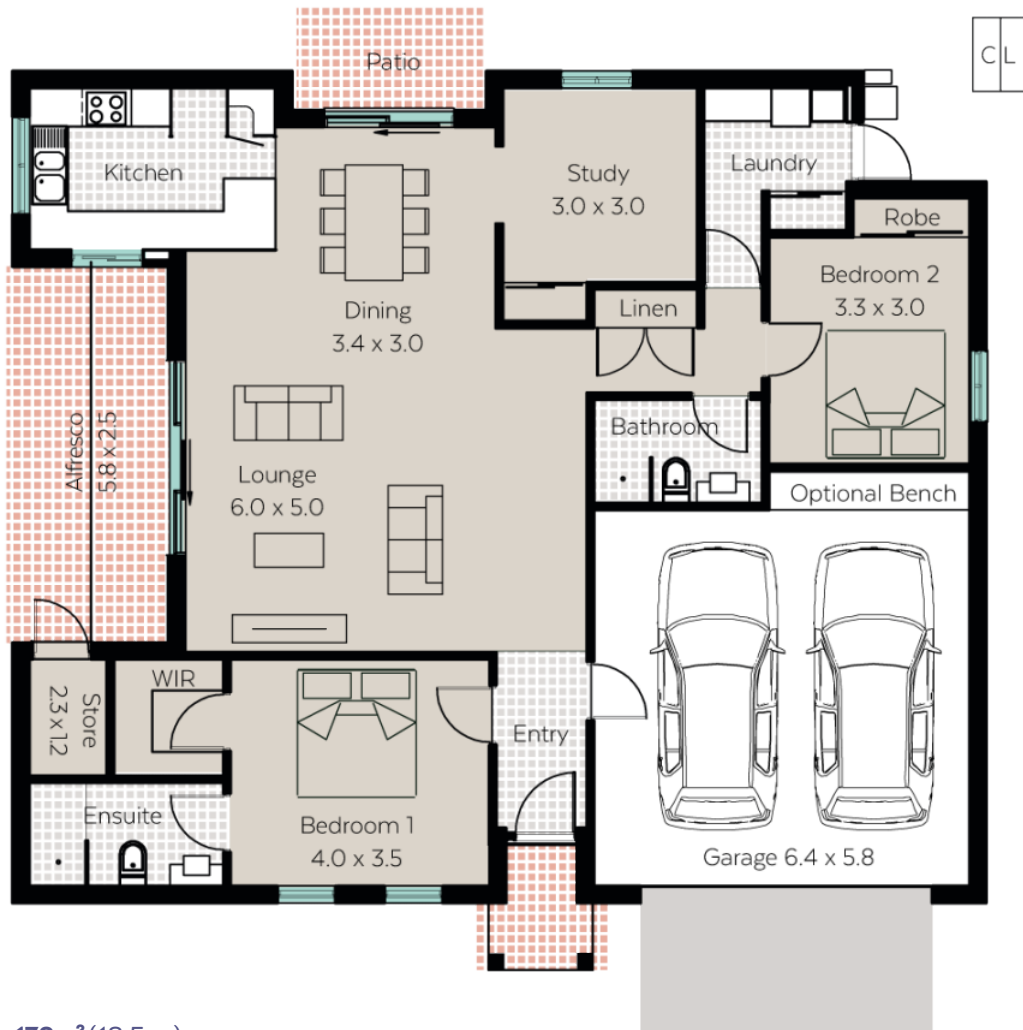
Sorrento

BELEURA VILLAGE



CENTENNIAL
LIVING

- 2 x
- 2 x
- 1 x
- 2 x



Villa and Garage	172m² (18.5sq)
Outdoor Living	16m² (1.7sq)
Total	188m² (20.2sq)

The information contained in this marketing material is indicative only and subject to change. Centennial Living Management makes no warranty regarding the accuracy of statements, figures, measurements, plans, images, location, building orientation, availability of fixtures and fittings or other representations. Please seek legal and independent financial advice in relation to all the information contained herein.

1300 098 000
www.centennialliving.com.au

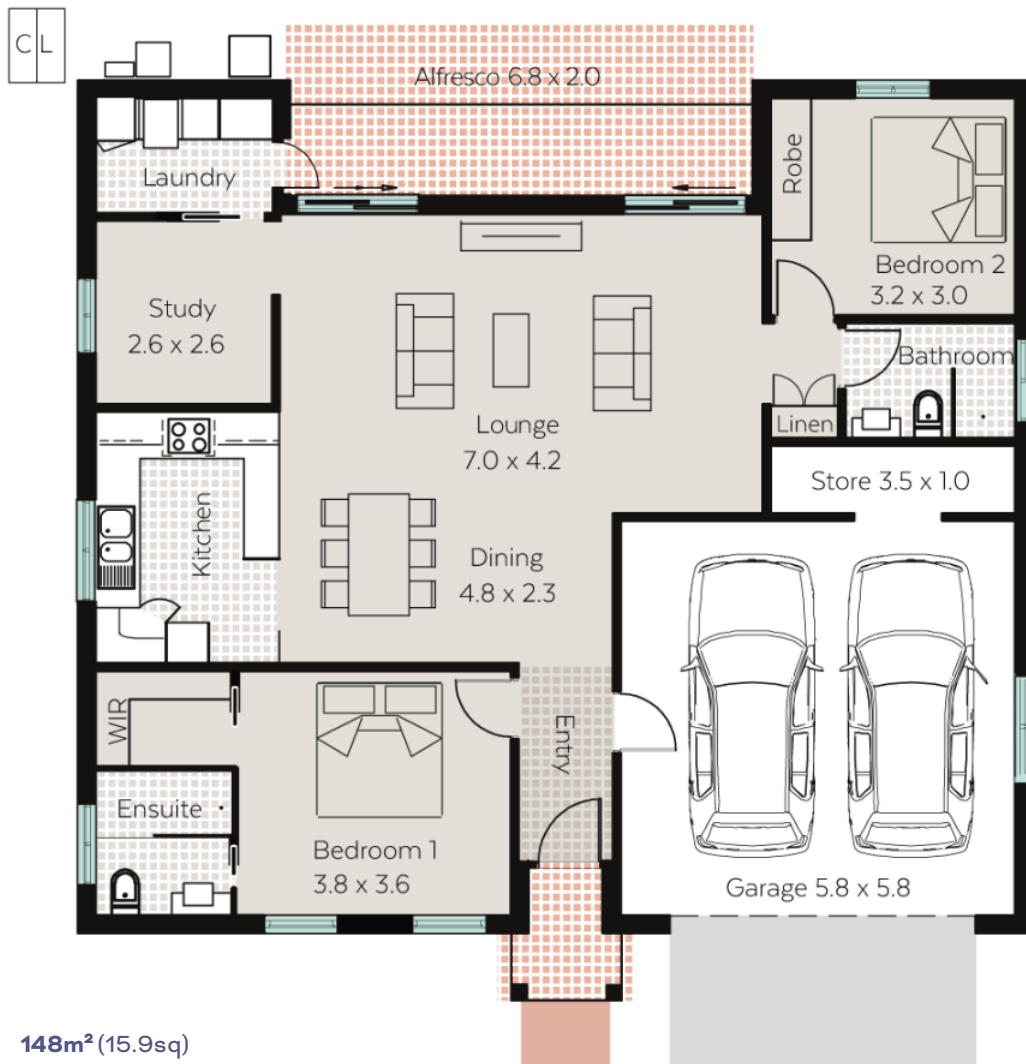
St Andrews

BELEURA VILLAGE



CENTENNIAL
LIVING

- 2 x
- 2 x
- 1 x
- 2 x



Villa and Garage	148m² (15.9sq)
Outdoor Living	15m² (1.6sq)
Total	163m² (17.5sq)

The information contained in this marketing material is indicative only and subject to change. Centennial Living Management makes no warranty regarding the accuracy of statements, figures, measurements, plans, images, location, building orientation, availability of fixtures and fittings or other representations. Please seek legal and independent financial advice in relation to all the information contained herein.

1300 098 000
www.centennialliving.com.au