

# Argyle

## CARDINIA WATERS VILLAGE



CENTENNIAL  
LIVING

2 x 

2 x 

1 x 

2 x 



Villa and Garage **168m<sup>2</sup>** (17sq)

Outdoor Living **17m<sup>2</sup>** (2sq)

**Total** **185m<sup>2</sup>** (19sq)

The information contained in this marketing material is indicative only and subject to change. Centennial Living Management makes no warranty regarding the accuracy of statements, figures, measurements, plans, images, location, building orientation, availability of fixtures and fittings or other representations. Please seek legal and independent financial advice in relation to all the information contained herein.

**1300 098 000**

[www.centennialliving.com.au](http://www.centennialliving.com.au)

# Eppalock

## CARDINIA WATERS VILLAGE



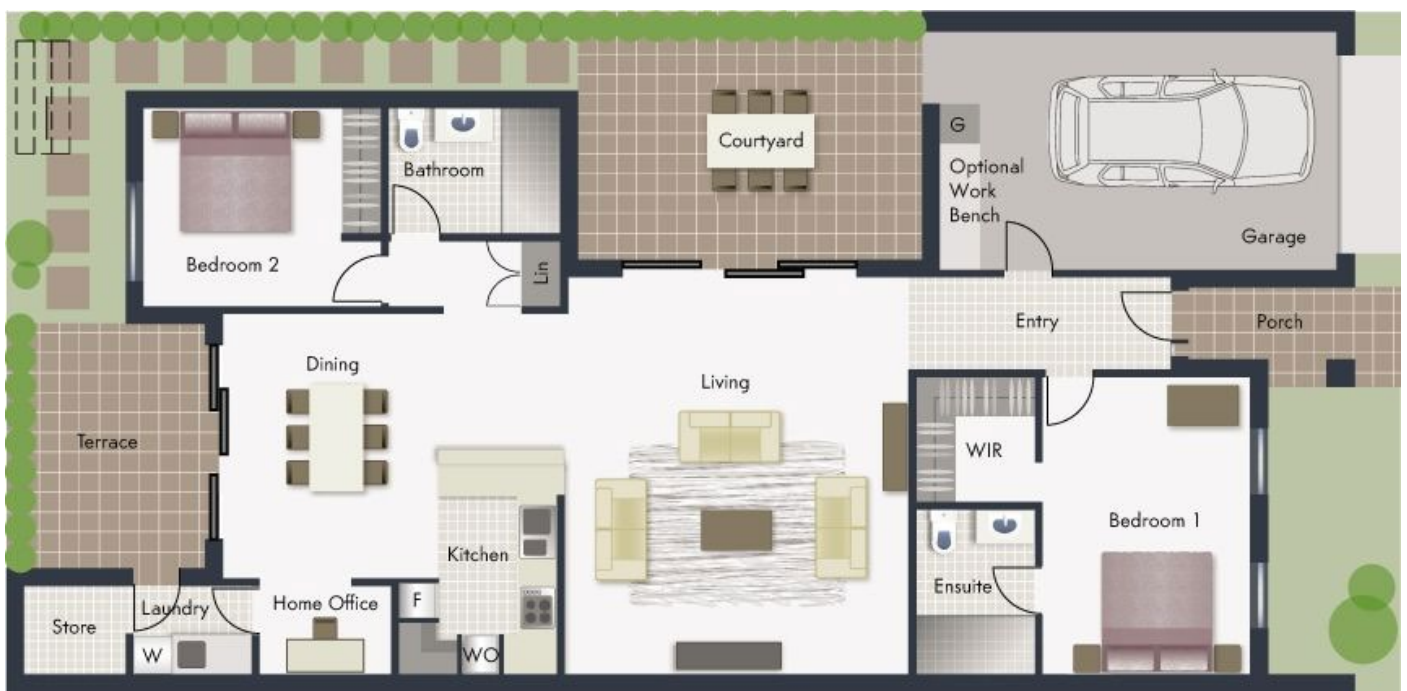
CENTENNIAL  
LIVING

2 x 

2 x 

1 x 

1 x 



Villa and Garage **142m<sup>2</sup>** (14.5sq)

Outdoor Living **29m<sup>2</sup>** (3sq)

**Total** **171m<sup>2</sup>** (17.5sq)

The information contained in this marketing material is indicative only and subject to change. Centennial Living Management makes no warranty regarding the accuracy of statements, figures, measurements, plans, images, location, building orientation, availability of fixtures and fittings or other representations. Please seek legal and independent financial advice in relation to all the information contained herein.

**1300 098 000**

[www.centennialliving.com.au](http://www.centennialliving.com.au)

# Glenmaggie

## CARDINIA WATERS VILLAGE



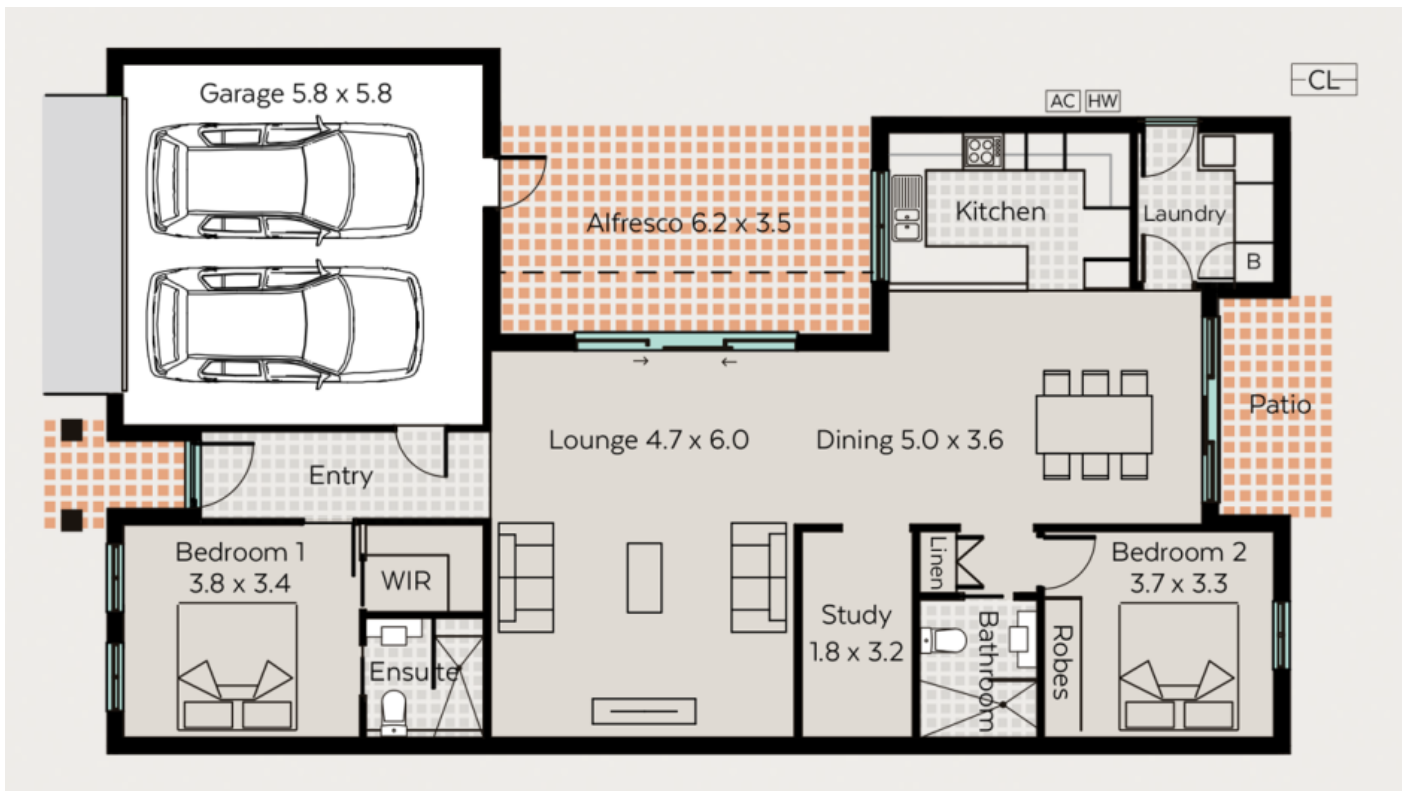
CENTENNIAL  
LIVING

2 x 

2 x 

1 x 

2 x 



The information contained in this marketing material is indicative only and subject to change. Centennial Living Management makes no warranty regarding the accuracy of statements, figures, measurements, plans, images, location, building orientation, availability of fixtures and fittings or other representations. Please seek legal and independent financial advice in relation to all the information contained herein.

**1300 098 000**

[www.centennialliving.com.au](http://www.centennialliving.com.au)

# Hume

## CARDINIA WATERS VILLAGE



CENTENNIAL  
LIVING

2 x 

1 x 

1 x 

1 x 



Villa and Garage **144m<sup>2</sup> (15sq)**

Outdoor Living **15m<sup>2</sup> (1.5sq)**

**Total 159m<sup>2</sup> (16.5sq)**

The information contained in this marketing material is indicative only and subject to change. Centennial Living Management makes no warranty regarding the accuracy of statements, figures, measurements, plans, images, location, building orientation, availability of fixtures and fittings or other representations. Please seek legal and independent financial advice in relation to all the information contained herein.

**1300 098 000**

[www.centennialliving.com.au](http://www.centennialliving.com.au)

# Jindabyne

## CARDINIA WATERS VILLAGE



CENTENNIAL  
LIVING

2 x 

1 x 

1 x 

2 x 



Villa and Garage **160m<sup>2</sup>** (16.5sq)

Outdoor Living **13m<sup>2</sup>** (1sq)

**Total** **173m<sup>2</sup>** (17.5sq)

The information contained in this marketing material is indicative only and subject to change. Centennial Living Management makes no warranty regarding the accuracy of statements, figures, measurements, plans, images, location, building orientation, availability of fixtures and fittings or other representations. Please seek legal and independent financial advice in relation to all the information contained herein.

**1300 098 000**

[www.centennialliving.com.au](http://www.centennialliving.com.au)

# Nagambie

## CARDINIA WATERS VILLAGE



CENTENNIAL  
LIVING

2 x 

2 x 

1 x 

1 x 



Villa and Garage **140m<sup>2</sup> (14.5sq)**

Outdoor Living **12m<sup>2</sup> (1sq)**

**Total 152m<sup>2</sup> (15.5sq)**

The information contained in this marketing material is indicative only and subject to change. Centennial Living Management makes no warranty regarding the accuracy of statements, figures, measurements, plans, images, location, building orientation, availability of fixtures and fittings or other representations. Please seek legal and independent financial advice in relation to all the information contained herein.

**1300 098 000**

[www.centennialliving.com.au](http://www.centennialliving.com.au)

# Pedder

## CARDINIA WATERS VILLAGE



CENTENNIAL  
LIVING

2 x 

1 x 

1 x 

1 x 



Villa and Garage **143m<sup>2</sup> (15.4sq)**

Outdoor Living **12m<sup>2</sup> (1.3sq)**

**Total 155m<sup>2</sup> (16.7sq)**

The information contained in this marketing material is indicative only and subject to change. Centennial Living Management makes no warranty regarding the accuracy of statements, figures, measurements, plans, images, location, building orientation, availability of fixtures and fittings or other representations. Please seek legal and independent financial advice in relation to all the information contained herein.

**1300 098 000**

[www.centennialliving.com.au](http://www.centennialliving.com.au)

# St Clair

## CARDINIA WATERS VILLAGE



CENTENNIAL  
LIVING

2 x 

1 x 

1 x 

1 x 



Villa and Garage **140m<sup>2</sup> (14.5sq)**

Outdoor Living **12m<sup>2</sup> (1sq)**

**Total 152m<sup>2</sup> (15.5sq)**

The information contained in this marketing material is indicative only and subject to change. Centennial Living Management makes no warranty regarding the accuracy of statements, figures, measurements, plans, images, location, building orientation, availability of fixtures and fittings or other representations. Please seek legal and independent financial advice in relation to all the information contained herein.

**1300 098 000**

[www.centennialliving.com.au](http://www.centennialliving.com.au)



# Wendouree

## CARDINIA WATERS VILLAGE



2 x 

1 x 

1 x 

2x 



Villa and Garage **159m<sup>2</sup> (16.5sq)**

Outdoor Living **13m<sup>2</sup> (1sq)**

**Total 172m<sup>2</sup> (17.5sq)**

The information contained in this marketing material is indicative only and subject to change. Centennial Living Management makes no warranty regarding the accuracy of statements, figures, measurements, plans, images, location, building orientation, availability of fixtures and fittings or other representations. Please seek legal and independent financial advice in relation to all the information contained herein.

**1300 098 000**

[www.centennialliving.com.au](http://www.centennialliving.com.au)