

# Apartments

## MAIN STREET VILLAGE



2 x 

1 x 

1 x 



Apartment	<b>69m<sup>2</sup></b> (7.4sq)
Balcony	<b>6.2m<sup>2</sup></b> (0.7sq)
<b>Total</b>	<b>75.2m<sup>2</sup></b> (8.1sq)

The information contained in this marketing material is indicative only and subject to change. Centennial Living Management makes no warranty regarding the accuracy of statements, figures, measurements, plans, images, location, building orientation, availability of fixtures and fittings or other representations. Please seek legal and independent financial advice in relation to all the information contained herein.

**1300 098 000**

[www.centennialliving.com.au](http://www.centennialliving.com.au)

# Norman 2

## MAIN STREET VILLAGE



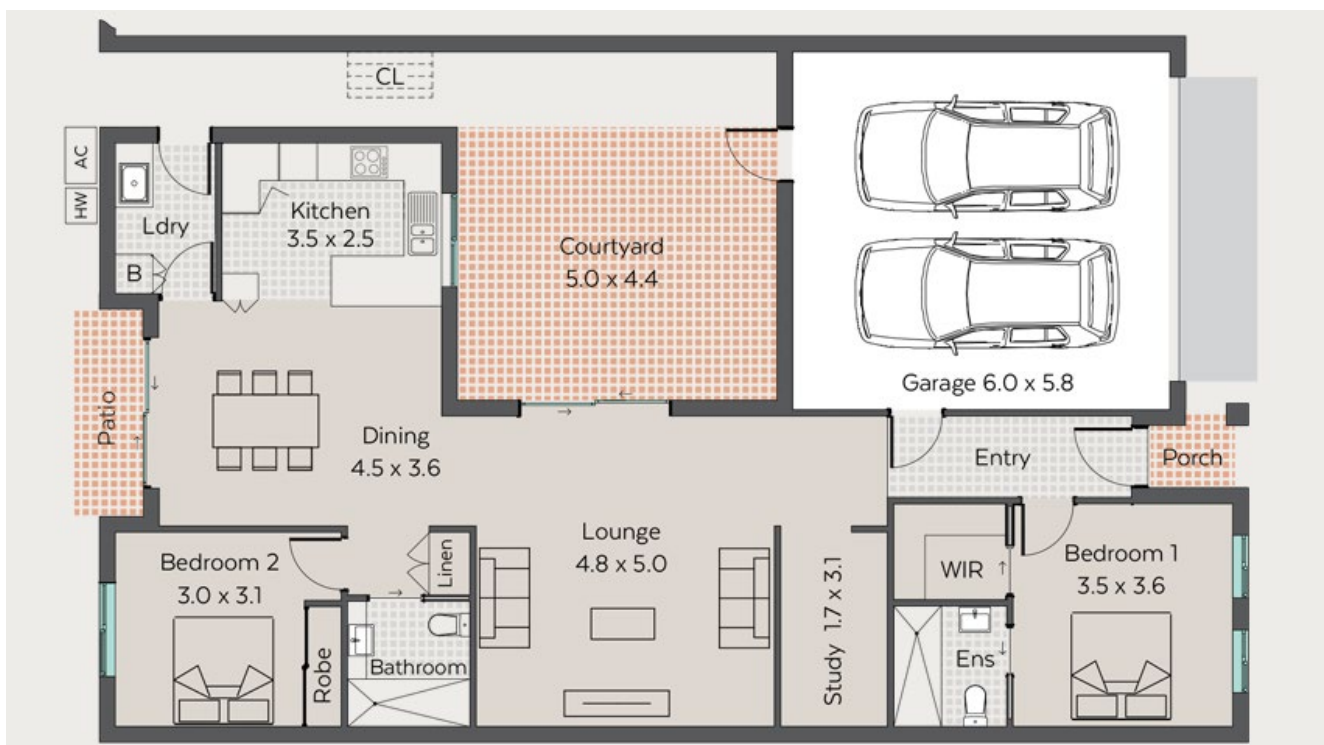
CENTENNIAL  
LIVING

2 x 

2 x 

1 x 

2 x 



Villa and Garage **154.9m<sup>2</sup>** (16.7sq)

Outdoor Living **25.8m<sup>2</sup>** (2.8sq)

**Total** **180.7m<sup>2</sup>** (19.5sq)

The information contained in this marketing material is indicative only and subject to change. Centennial Living Management makes no warranty regarding the accuracy of statements, figures, measurements, plans, images, location, building orientation, availability of fixtures and fittings or other representations. Please seek legal and independent financial advice in relation to all the information contained herein.

**1300 098 000**

[www.centennialliving.com.au](http://www.centennialliving.com.au)

# Parkes

## MAIN STREET VILLAGE



CENTENNIAL  
LIVING

- 2 x
- 2 x
- 1 x
- 2 x



Villa and Garage	<b>161.9m<sup>2</sup></b> (17.3sq)
Outdoor Living	<b>16m<sup>2</sup></b> (1.7sq)
<b>Total</b>	<b>177m<sup>2</sup></b> (19sq)

The information contained in this marketing material is indicative only and subject to change. Centennial Living Management makes no warranty regarding the accuracy of statements, figures, measurements, plans, images, location, building orientation, availability of fixtures and fittings or other representations. Please seek legal and independent financial advice in relation to all the information contained herein.

**1300 098 000**

[www.centennialliving.com.au](http://www.centennialliving.com.au)

# Paterson

## MAIN STREET VILLAGE



CENTENNIAL  
LIVING

- 2 x
- 2 x
- 1 x
- 2 x



Villa and Garage	<b>153m<sup>2</sup></b> (16.5sq)
Outdoor Living	<b>23m<sup>2</sup></b> (2.5sq)
<b>Total</b>	<b>176m<sup>2</sup></b> (19sq)

The information contained in this marketing material is indicative only and subject to change. Centennial Living Management makes no warranty regarding the accuracy of statements, figures, measurements, plans, images, location, building orientation, availability of fixtures and fittings or other representations. Please seek legal and independent financial advice in relation to all the information contained herein.

**1300 098 000**  
[www.centennialliving.com.au](http://www.centennialliving.com.au)

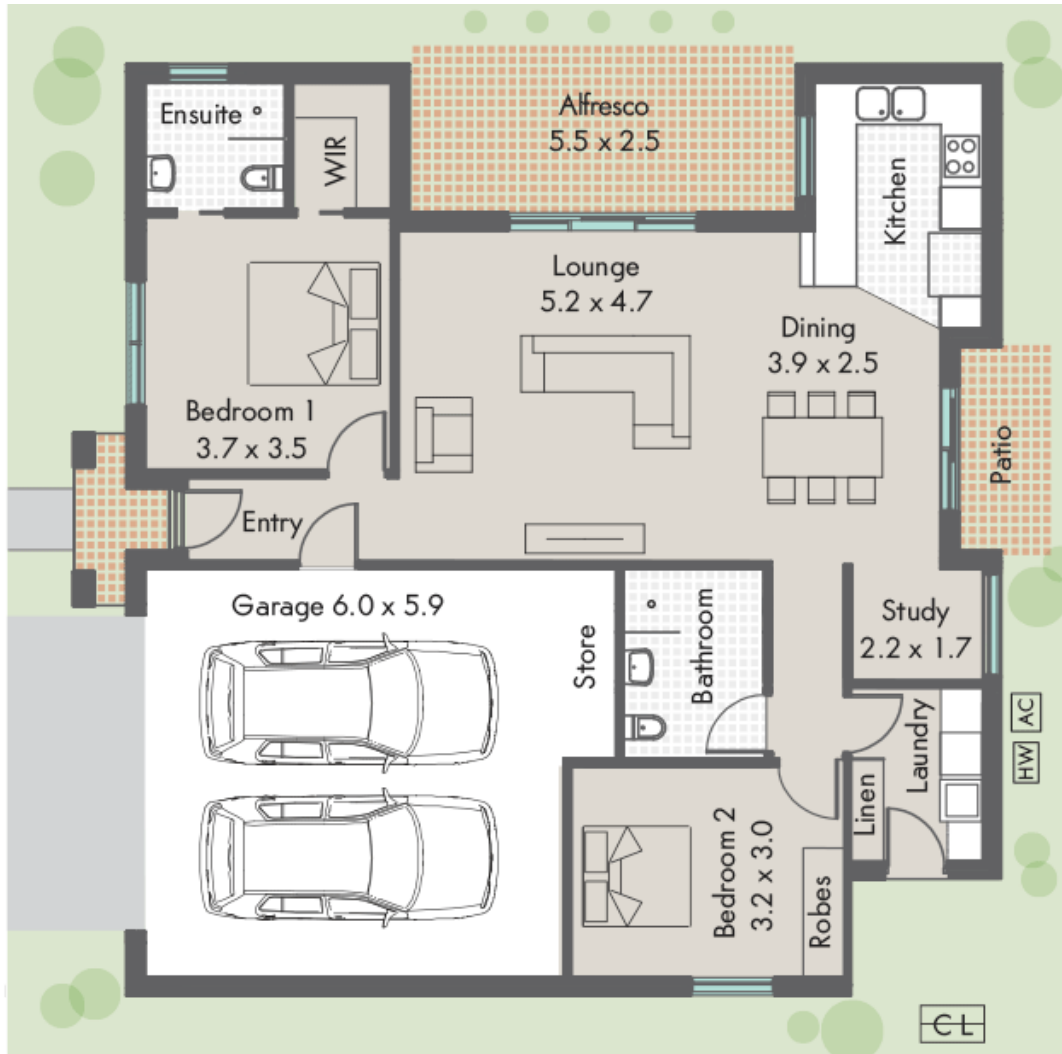
# Webster

## MAIN STREET VILLAGE



CENTENNIAL  
LIVING

- 2 x
- 2 x
- 1 x
- 2 x



Villa and Garage	<b>149m<sup>2</sup></b> (16sq)
Outdoor Living	<b>18m<sup>2</sup></b> (1.9sq)
<b>Total</b>	<b>167m<sup>2</sup></b> (17.9sq)

The information contained in this marketing material is indicative only and subject to change. Centennial Living Management makes no warranty regarding the accuracy of statements, figures, measurements, plans, images, location, building orientation, availability of fixtures and fittings or other representations. Please seek legal and independent financial advice in relation to all the information contained herein.

**1300 098 000**

[www.centennialliving.com.au](http://www.centennialliving.com.au)