

Chirnside

WYNDHAM GRANGE VILLAGE



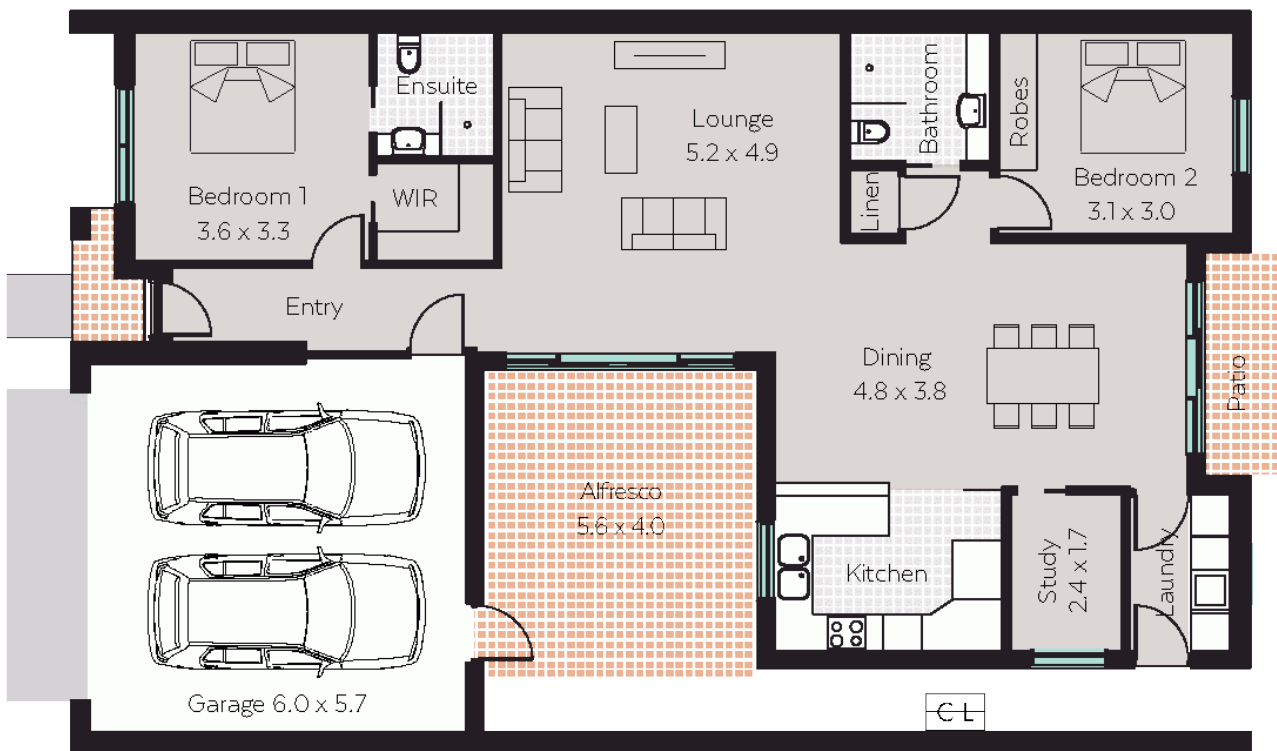
CENTENNIAL
LIVING

2 x 

2 x 

1 x 

2 x 



Villa and Garage **162m²** (17.4sq)

Outdoor Living **26m²** (2.8sq)

Total **188m²** (20.2sq)

The information contained in this marketing material is indicative only and subject to change. Centennial Living Management makes no warranty regarding the accuracy of statements, figures, measurements, plans, images, location, building orientation, availability of fixtures and fittings or other representations. Please seek legal and independent financial advice in relation to all the information contained herein.

1300 098 000

www.centennialliving.com.au

Eastcott

WYNDHAM GRANGE VILLAGE



CENTENNIAL
LIVING

- 2 x
- 2 x
- 1 x
- 2 x



Villa and Garage	154m ² (16.6sq)
Outdoor Living	18m ² (1.9sq)
Total	172m² (18.5sq)

The information contained in this marketing material is indicative only and subject to change. Centennial Living Management makes no warranty regarding the accuracy of statements, figures, measurements, plans, images, location, building orientation, availability of fixtures and fittings or other representations. Please seek legal and independent financial advice in relation to all the information contained herein.

1300 098 000

www.centennialliving.com.au

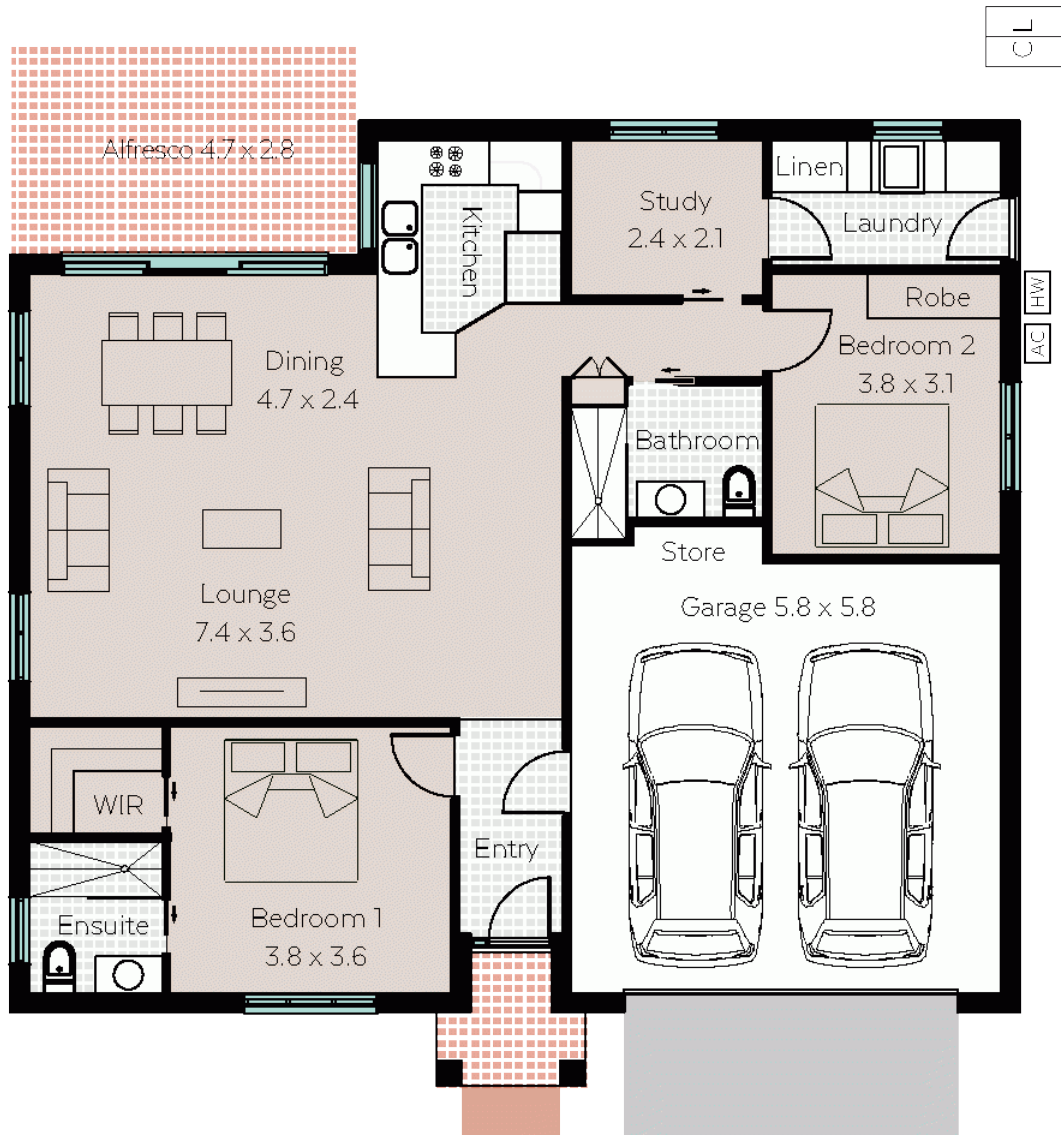
McKenzie

WYNDHAM GRANGE VILLAGE



CENTENNIAL
LIVING

- 2 x
- 2 x
- 1 x
- 2 x



Villa and Garage **154m²** (16.6sq)

Outdoor Living **15m²** (1.6sq)

Total **169m²** (18.2sq)

The information contained in this marketing material is indicative only and subject to change. Centennial Living Management makes no warranty regarding the accuracy of statements, figures, measurements, plans, images, location, building orientation, availability of fixtures and fittings or other representations. Please seek legal and independent financial advice in relation to all the information contained herein.

1300 098 000

www.centennialliving.com.au

Oakbank

WYNDHAM GRANGE VILLAGE



CENTENNIAL
LIVING

- 2 x
- 2 x
- 1 x
- 2 x



Villa and Garage	156m² (16.8sq)
Outdoor Living	18m² (1.9sq)
Total	174m² (18.7sq)

The information contained in this marketing material is indicative only and subject to change. Centennial Living Management makes no warranty regarding the accuracy of statements, figures, measurements, plans, images, location, building orientation, availability of fixtures and fittings or other representations. Please seek legal and independent financial advice in relation to all the information contained herein.

1300 098 000

www.centennialliving.com.au