

Apartments

MAIN STREET VILLAGE



2 x 

1 x 

1 x 



Apartment	69m² (7.4sq)
Balcony	6.2m² (0.7sq)
Total	75.2m² (8.1sq)

The information contained in this marketing material is indicative only and subject to change. Centennial Living Management makes no warranty regarding the accuracy of statements, figures, measurements, plans, images, location, building orientation, availability of fixtures and fittings or other representations. Please seek legal and independent financial advice in relation to all the information contained herein.

1300 098 000
www.centennialliving.com.au

Norman

MAIN STREET VILLAGE



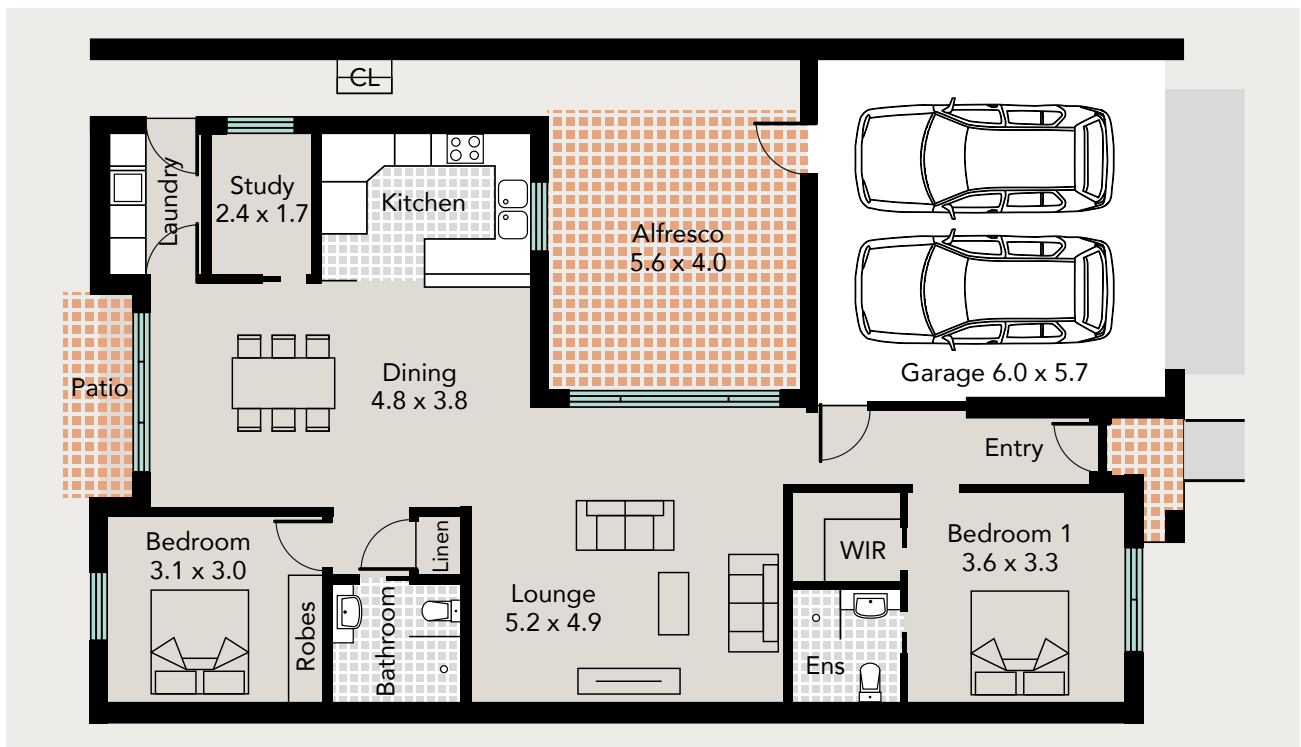
CENTENNIAL
LIVING

2 x 

2 x 

1 x 

2 x 



Villa and Garage **162m²** (17.4sq)

Outdoor Living **26m²** (2.8sq)

Total **188m²** (20.2sq)

The information contained in this marketing material is indicative only and subject to change. Centennial Living Management makes no warranty regarding the accuracy of statements, figures, measurements, plans, images, location, building orientation, availability of fixtures and fittings or other representations. Please seek legal and independent financial advice in relation to all the information contained herein.

www.centennialliving.com.au

Parkes

MAIN STREET VILLAGE



CENTENNIAL
LIVING

- 2 x
- 2 x
- 1 x
- 2 x



Villa and Garage	161.9m² (17.3sq)
Outdoor Living	16m² (1.7sq)
Total	177m² (19sq)

The information contained in this marketing material is indicative only and subject to change. Centennial Living Management makes no warranty regarding the accuracy of statements, figures, measurements, plans, images, location, building orientation, availability of fixtures and fittings or other representations. Please seek legal and independent financial advice in relation to all the information contained herein.

1300 098 000

www.centennialliving.com.au

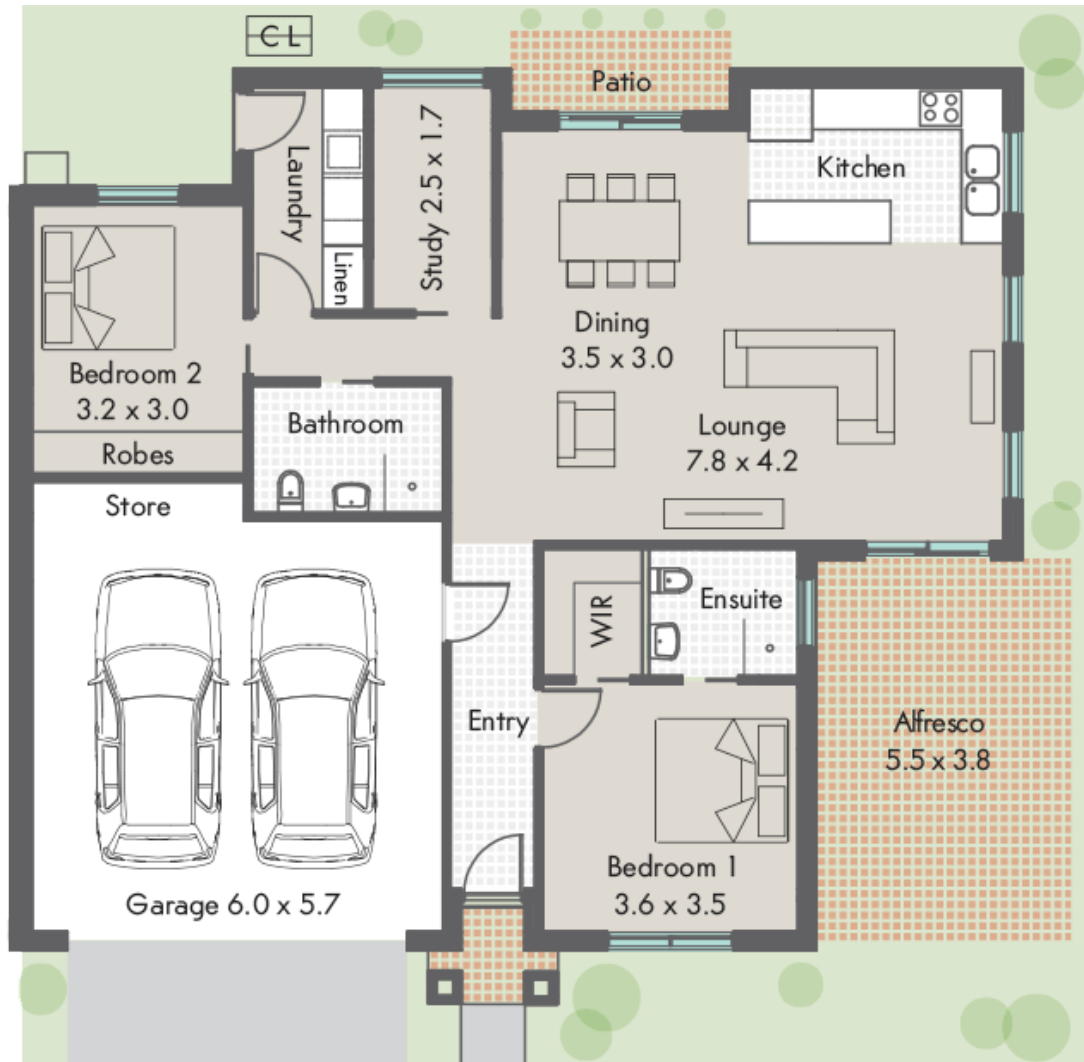
Paterson

MAIN STREET VILLAGE



CENTENNIAL
LIVING

- 2 x 
- 2 x 
- 1 x 
- 2 x 



Villa and Garage	153m² (16.5sq)
Outdoor Living	23m² (2.5sq)
Total	176m² (19sq)

The information contained in this marketing material is indicative only and subject to change. Centennial Living Management makes no warranty regarding the accuracy of statements, figures, measurements, plans, images, location, building orientation, availability of fixtures and fittings or other representations. Please seek legal and independent financial advice in relation to all the information contained herein.

1300 098 000
www.centennialliving.com.au

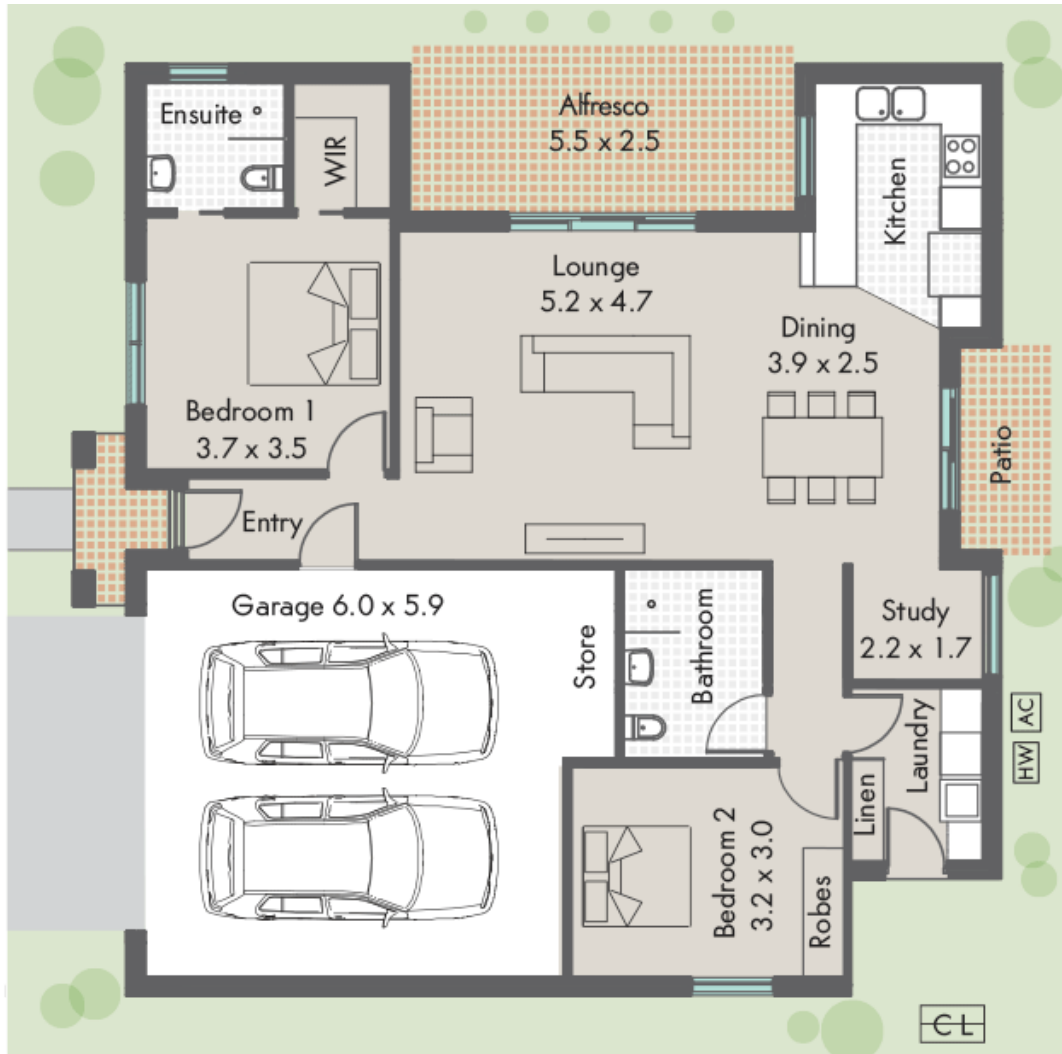
Webster

MAIN STREET VILLAGE



CENTENNIAL
LIVING

- 2 x
- 2 x
- 1 x
- 2 x



Villa and Garage	149m² (16sq)
Outdoor Living	18m² (1.9sq)
Total	167m² (17.9sq)

The information contained in this marketing material is indicative only and subject to change. Centennial Living Management makes no warranty regarding the accuracy of statements, figures, measurements, plans, images, location, building orientation, availability of fixtures and fittings or other representations. Please seek legal and independent financial advice in relation to all the information contained herein.

1300 098 000

www.centennialliving.com.au